



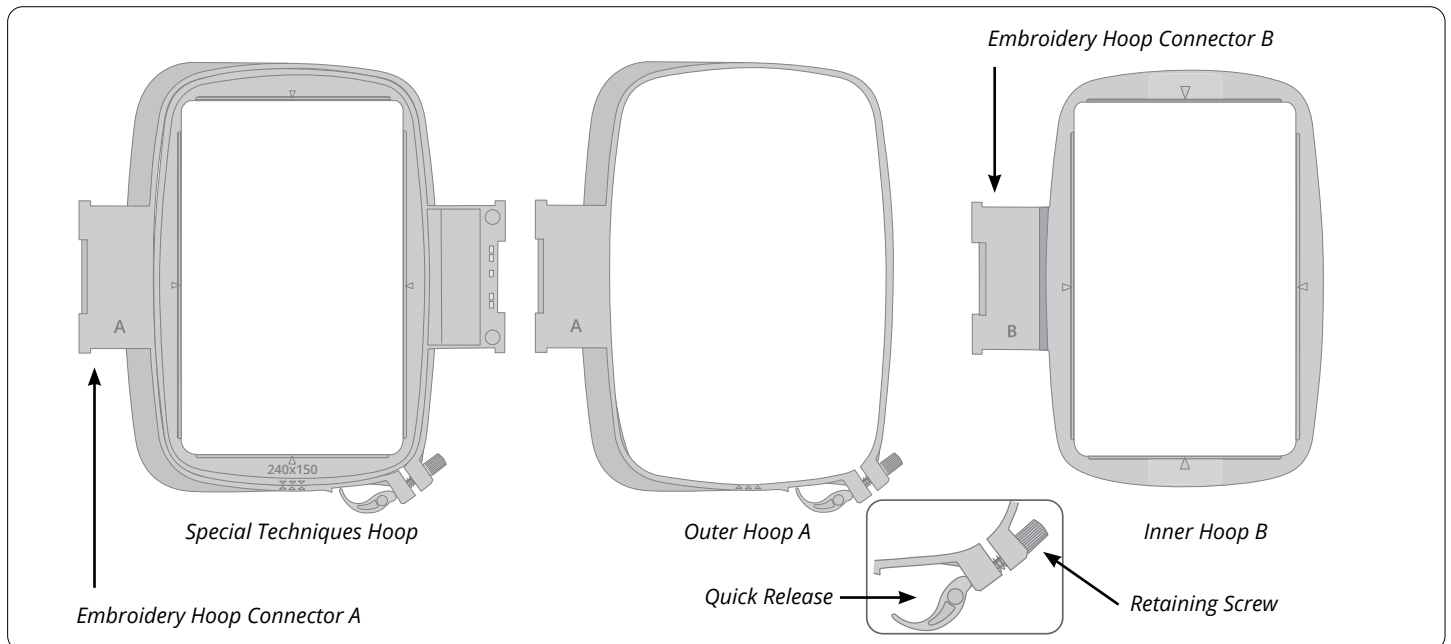
## SPECIAL TECHNIQUES HOOP 240X150MM

# User Instructions

The Special Techniques hoop is a reversible hoop where you can embroider on both sides of the hoop. This makes it possible to use several embroidery techniques in just one hooping. Combine basic embroidery with techniques like appliqué, felting and bobbin work.

Depending on what technique you embroider, the embroidery process is different. For each design, you will be guided by your machine, and notified when it is time to change machine equipment or settings.

For felting and bobbin work techniques you need to have optional accessories, how to use those accessories are described in respective accessory user instruction.



**FR** Un mode d'emploi en français peut se télécharger sur [www.husqvarnaviking.com](http://www.husqvarnaviking.com). Rechercher "Special Techniques Hoop 240x150mm" sous le titre "Accessoires".

**DE** Die Bedienungsanleitung auf Deutsch können Sie unter [www.husqvarnaviking.com](http://www.husqvarnaviking.com) herunterladen. Suche nach "Special Techniques Hoop 240x150mm" unter der Überschrift "Zubehör".

**NL** Nederlands gebruiksinstructies kunnen worden gedownload op [www.husqvarnaviking.com](http://www.husqvarnaviking.com). Zoeken naar "Special Techniques Hoop 240x150mm" onder de kop "Accessoires".

**IT** Le istruzioni d'uso in italiano sono disponibili per lo scarico da [www.husqvarnaviking.com](http://www.husqvarnaviking.com). Cerca in "Special Techniques Hoop 240x150mm" sotto il titolo "Accessori".

**ES** Las instrucciones de uso en español están disponibles para su descarga en [www.husqvarnaviking.com](http://www.husqvarnaviking.com). Buscar "Special Techniques Hoop 240x150mm" en el apartado "Accesorios".

**SV** Användarinstruktioner på svenska finns att hämta på [www.husqvarnaviking.com](http://www.husqvarnaviking.com). Sök efter "Special Techniques Hoop 240x150mm" under rubriken "Tillbehör".

**DK** En dansk brugervejledning kan downloades fra [www.husqvarnaviking.com](http://www.husqvarnaviking.com). Søg efter "Special Techniques Hoop 240x150mm" under overskriften "Exstratillbehør".

**NO** Norsk bruksanvisning er tilgjengelig for nedlasting fra [www.husqvarnaviking.com](http://www.husqvarnaviking.com). Søk etter "Special Techniques Hoop 240x150mm" under overskriften "Exstratillbehør".

**FI** Suomenkieliset käyttöohjeet ovat ladattavissa osoitteessa [www.husqvarnaviking.com](http://www.husqvarnaviking.com). Etsiä "Special Techniques Hoop 240x150mm" otsikolla "Lisätarvikkeet".

**RU** Инструкции по эксплуатации на русском языке можно загрузить на веб-сайте [www.husqvarnaviking.com](http://www.husqvarnaviking.com). искать "Special Techniques Hoop 240x150mm" под заголовком "Принадлежности".

## HOOPING

When hooping, always hoop with the A-side facing up. The fabric should be placed in the hoop with the right side up.

- Open the quick release on the outer hoop A, and loosen the retaining screw. Remove the inner hoop B.
- Place the outer hoop A on a firm flat surface with the screw to the lower right.
- Place the stabilizer and fabric, with the right sides facing up, on top of the outer hoop A. Place the inner hoop B on top of the fabric with the small arrows at the bottom edge. If you can see the hoop size in the lower part of the inner hoop, you have attached it correctly.

*Note: different techniques require different stabilizers. The placement of the stabilizer could also differ. See directions for each technique.*

- Push the inner hoop B firmly into the outer hoop A. Unlike other hoops, the inner and outer hoops are not levelled once correctly hooped.
- Hold the fabric and stabilizer with your right hand while using your left hand to push the fabric towards the left edge of the hoop. Carefully pull the fabric outside the hoop until it is flat and taut in the hoop. Carefully pull the fabric at the top and bottom of the hoop.
- Close the quick release.
- Turn the hoop over. Pull the fabric edge to the left.
- Adjust the pressure of the outer hoop by turning the retaining screw until it's really tight. The fabric should be taut in the hoop for the best results.

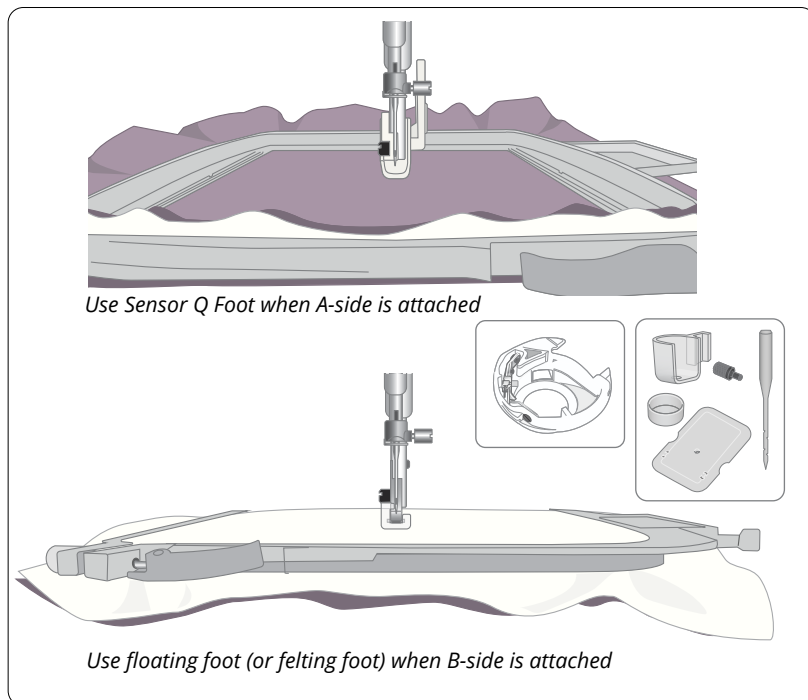
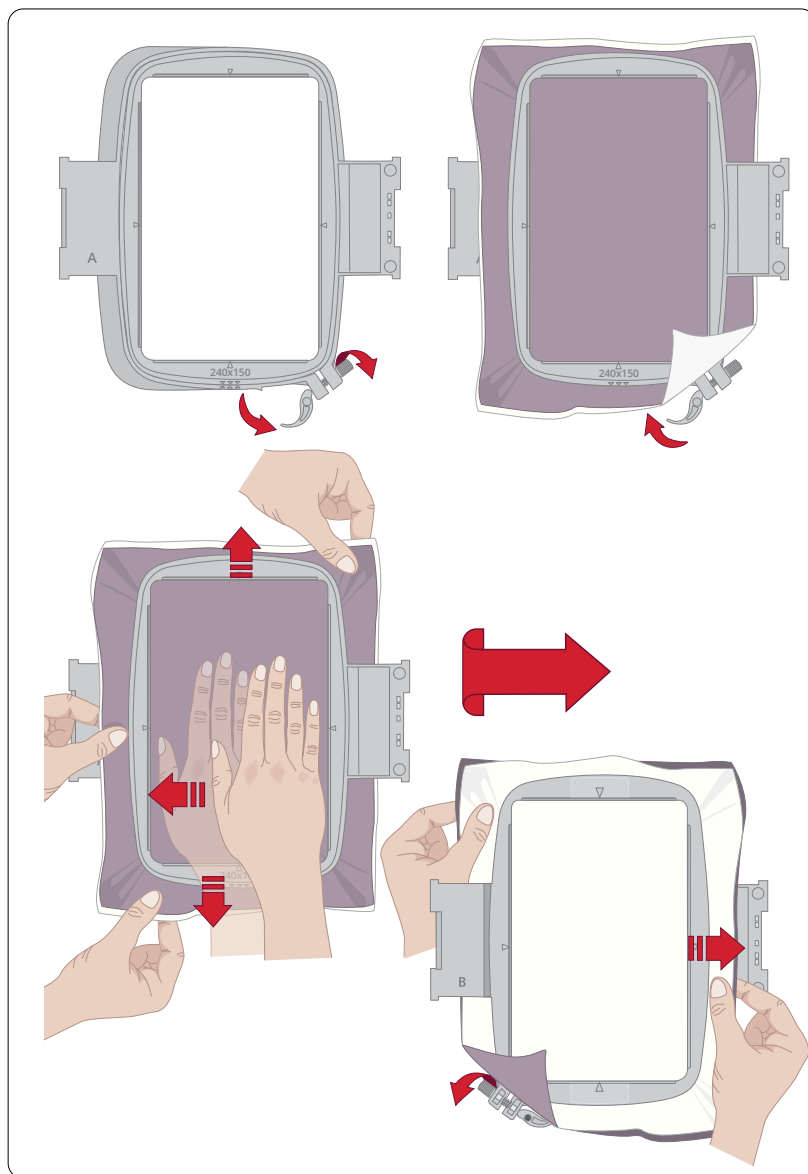
*For tips and hints on how to hoop for the different techniques, please refer to the instructions for respective accessory. You can also learn more from the tutorials built into your machine.*

## MACHINE SET UP

For each embroidery design, your machine will let you know how to prepare for the different color/technique blocks. You will be notified when the hoop should be flipped, when to prepare for felting, bobbin work etc.

## TIPS & HINTS

- Always hoop with the A-side facing up. The fabric should be placed in the hoop with the right side up.
- When embroidering with the A-side connected, activate "Sensor Q Foot" in Embroidery Settings and use the Sensor Q Foot.
- Felting and bobbin work is done with the B-side connected.
- When embroidering with the B-side attached, activate "Floating Foot" in Embroidery Settings. Use the Felting accessory or the R Foot.
- When using the felting accessory or the R-Foot you might need to adjust the presser foot pivot height for best result.



Use Sensor Q Foot when A-side is attached

Use floating foot (or felting foot) when B-side is attached